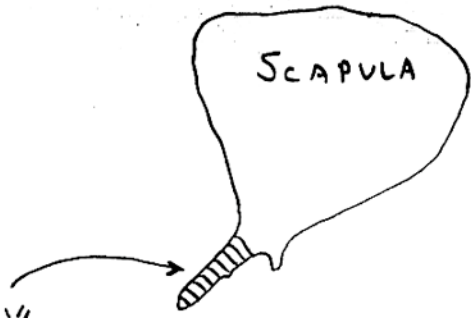


EVOLUTION OF THE CORACOIDS

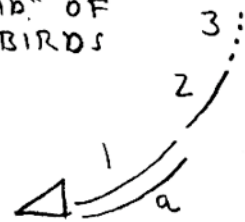


" is POSTCORACOID = FUSED TO SCAPULA
CALLED CORACOID PROCESS OF SCAPULA

NOTE: "CORACOID" OF LIVING MARSUPIALS + PLACENTAL MAMMAL NOT HOMOLOGOUS TO "CORACOID" OF REPTILES + BIRDS



PLACENTALS + LIVING MAMMALS (MARSUPIALS) EXCEPT MONOTREMES



REPTILES + BIRDS

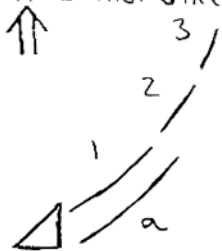
" is POSTCORACOID OR POSTERIOR CORACOID

" is PROCORACOID



THERAPSID (MAMMAL-LIKE REPTILE) AND MONOTREMES (EGG-LAYING MAMMALS)

" is PROCORACOID OR ANTERIOR CORACOID



EARLY REPTILE (STEM REPTILE)

SUPRASCAPULA = 3 / c = SUPRACLEITHRUM

SCAPULA = 2 / b = CLEITHRUM

"CORACOID" = 1

INTERCLAVICLE a = CLAVICLE

① EARLY TETRAPOD (AMPHIBIAN)