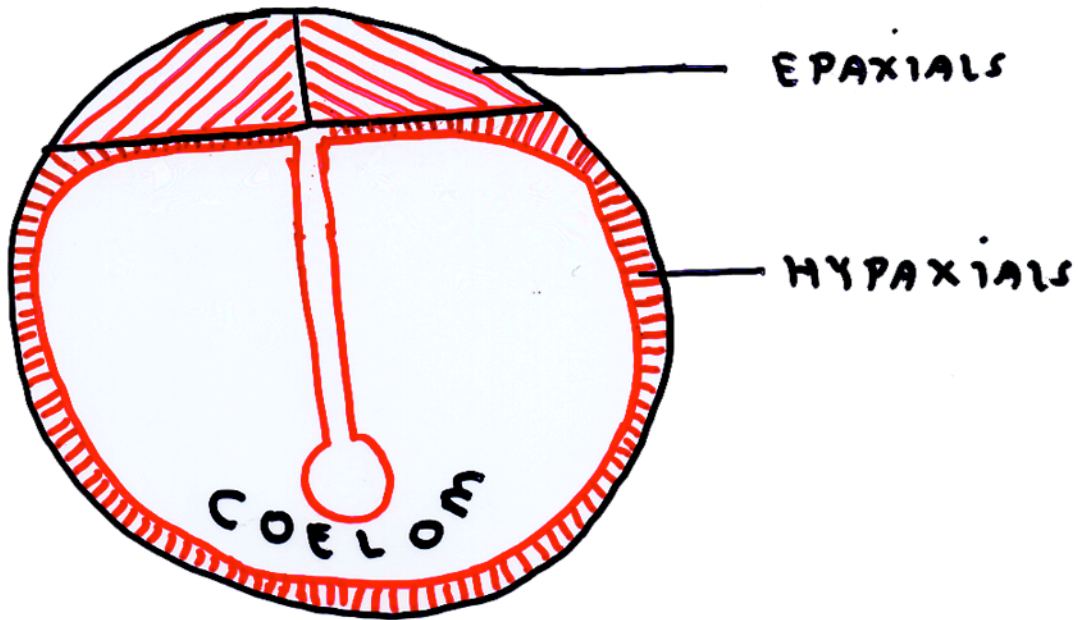


IN TETRAPODS

7



GENERAL TRENDS IN LAND VERTEBRATES

1) COELOM ENLARGED

a. HYPAXIAL MASS GREATLY REDUCED

2) SEGMENTATION REDUCED

a. LOSS OF MYOSEPTA

b. LENGTHENED MUSCLES EXTEND AS STRAPS ACROSS SEVERAL BODY SEGMENTS