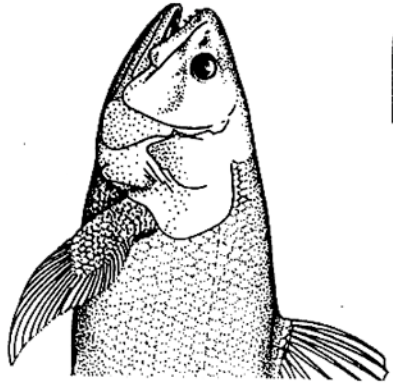
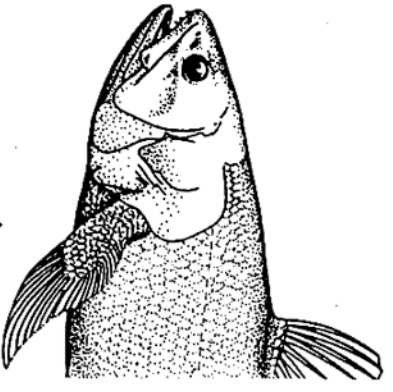


5 BRANCHIOMERIC MUSCLES AND IIND VISCERAL ARCH

FISH

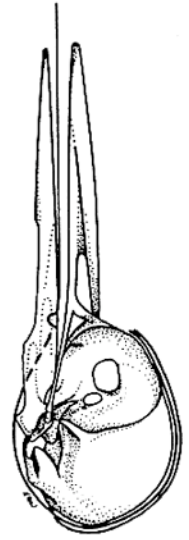


VENTRAL CONSTRICTOR.
WORKS GILLS



DORSAL CONSTRICTOR (PART)
VENTRAL CONSTRICTOR (PART)
WORKS OPENCULUM

TETRAPODS (EXCEPT MAMMALS)



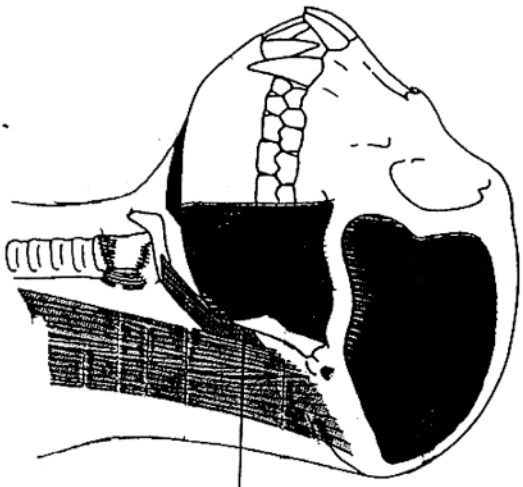
HYOID APPARATUS
WORKS HYOID



SPHINCTER COLLI
WORKS NECK



MAMMALS

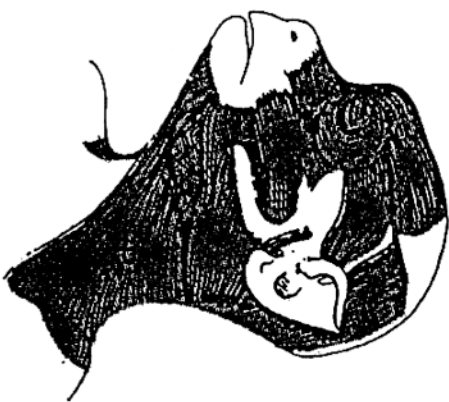


DIGASTRIC MUSCLE (IN PART)
WORKS LOWER JAW
TO LOWER IT

DIGAST-
RIC



SPHINCTER COLLI
PLATYSMA



PLATYSMA