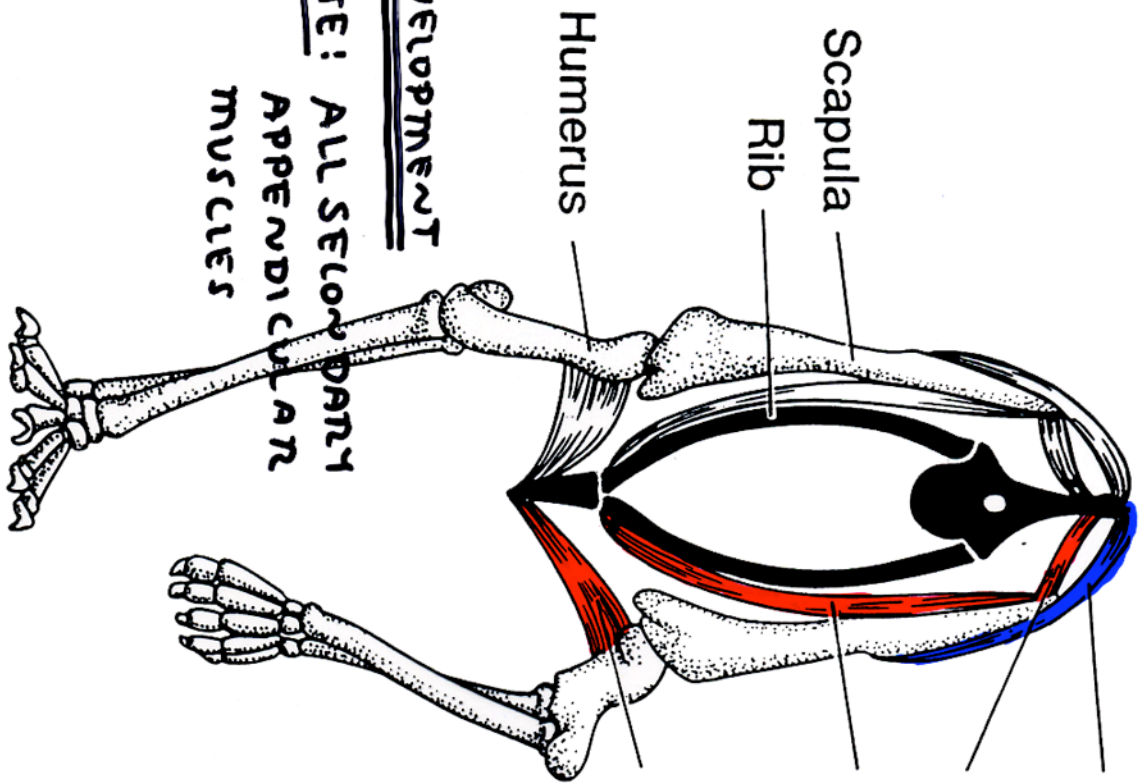


MUSCLES OF PECTORAL GIRDLE



Trapezius * ORIGIN VERTEBRAE * INSERTION SCAPULA

Rhomboides * VERTEBRAE * SCAPULA

Serratus * RIBS * SCAPULA
ventralis

Pectoralis * STERNUM * HUMERUS

* FROM BRANCHIOMERICS
* FROM LATERAL HYPARIALS
* MYOTOME

FUNCTION
NOTE: ORIGINIS ALL OUTSIDE LIMBS
THUS, ALL MUSCLES EXTRINSIC

NOTE: IF TRANSFER MUSCLES
CAN REMOVE LIMB/GIRDLE

NOTE: NO PELVIC GIRDLE
FUSED TO SACRUM/VERTEBRAE

DEVELOPMENT

NOTE: ALL SECONDARY
APPENDICULAR
MUSCLES