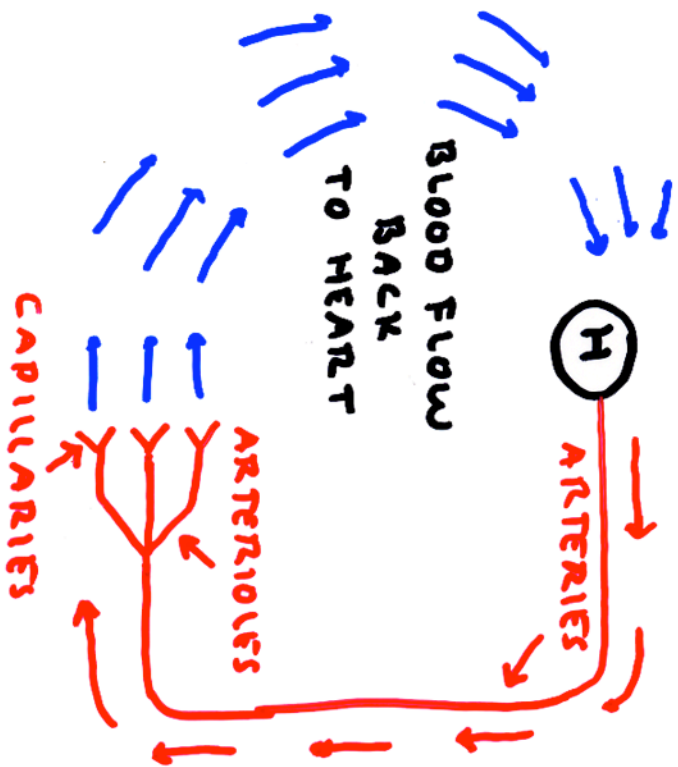


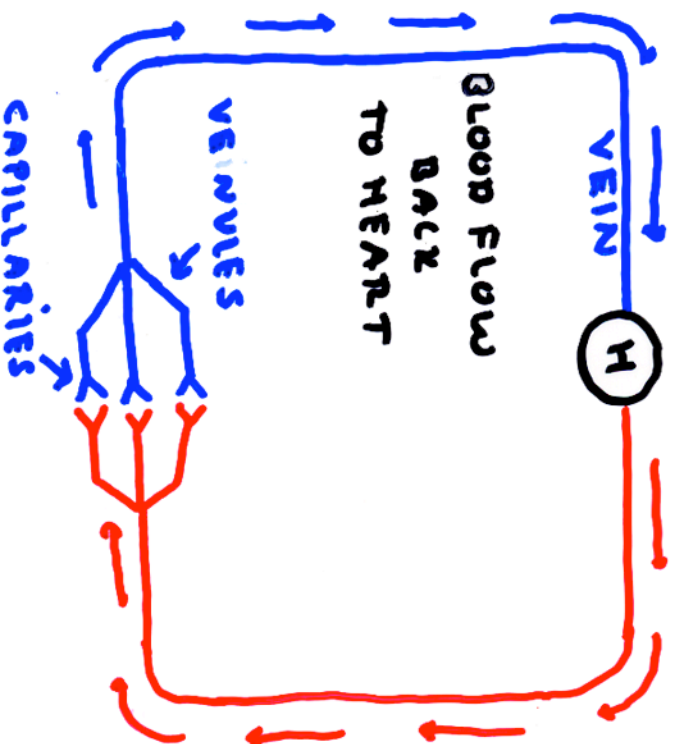
Invertebrate Circulation

Open



BLOOD CELLS LEAVE PLUMBINE
 ENTER SPACES BETWEEN ORGANS
 THEN BACK TO HEART

* Closed *



BLOOD NEVER LEAVES PLUMBINE
 ALWAYS ENCLOSED
 THEN BACK TO HEART

* VERTEBRATES *