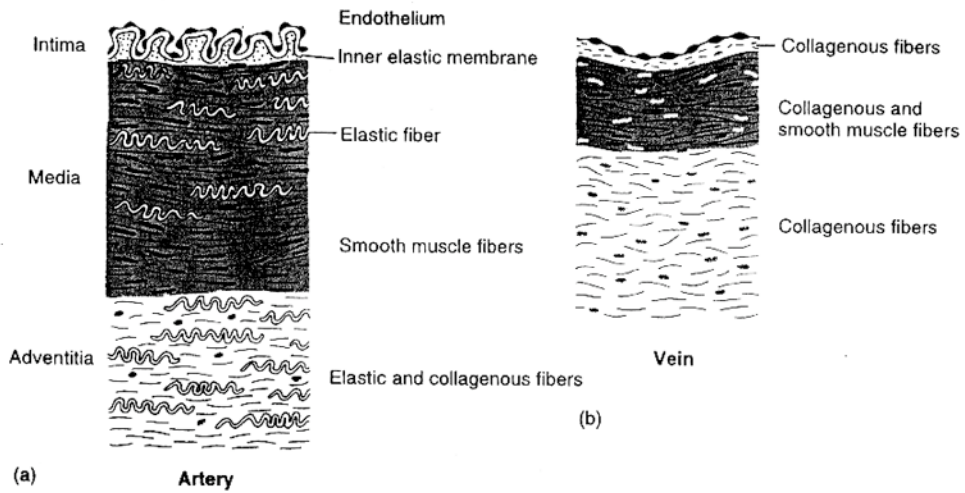
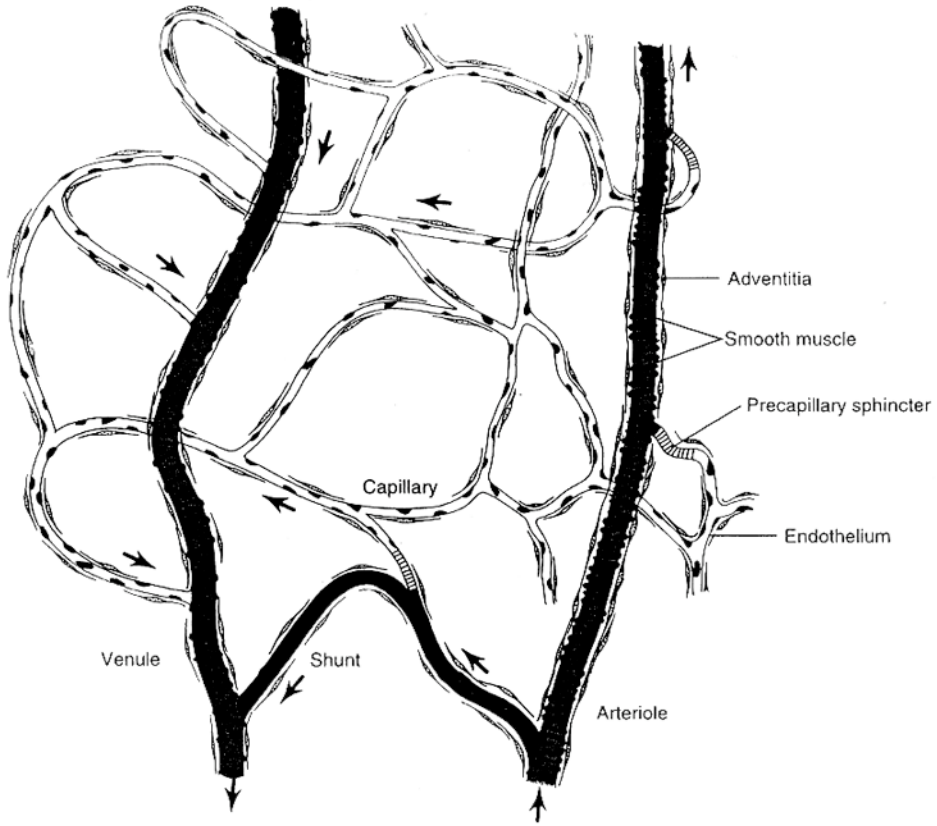


Muscles Associated with Skeletal Elements of First Visceral Arch

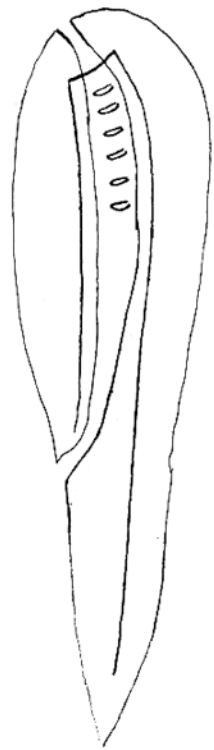
Group	Function	Muscle	Ancestral Homology	Germ Layer
Fish	Raise Jaw	Adductor Mandibulae	Branchiomic Adductor VA I	Ecto.
Tetrapods (non-mammals)	Raise Jaw	Adductor Mandibulae	Adductor Mandibulae	Ecto.
Mammals	Raise Jaw	Temporalis Masseter Pterygoideus	Adductor Mandibulae (into 3 pieces)	Ecto.

Group	Function	Muscle	Ancestral Homology	Germ Layer
Fish	Lower Jaw	Coraco-Mandibularis	Hypobranchial Myotome	Meso.
Tetrapods (non-mammals)	Lower Jaw	Depressor Mandibulae	Branchiomic Dorsal Constrictor VA II	Ecto.
Mammals	Lower Jaw	Digastric	Branchiomic Ventral Constrictors VA I & VA II	Ecto.

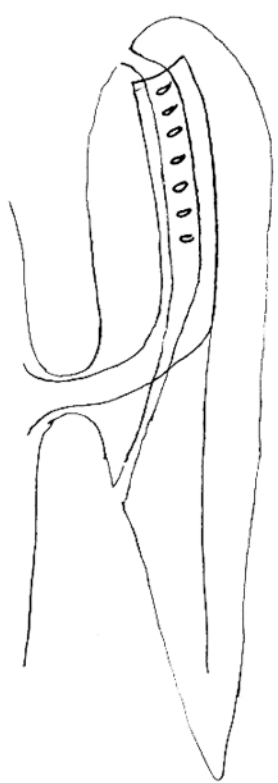


Embryonic Circulation

MESOLECITHAL



MACROLECITHAL



MACROLECITHAL

