

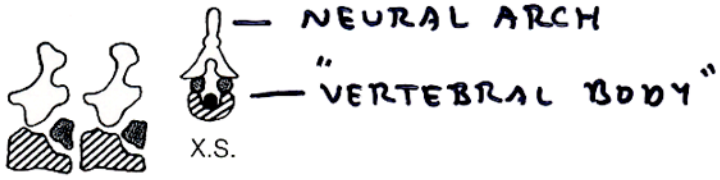




TRENDS IN VERTEBRAL BODY EVOLUTION

TETRAPOD ANCESTOR (SARCOPTERYGIAN)

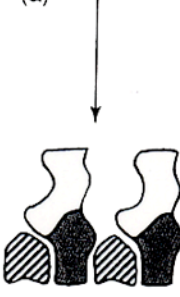
-  NEURAL ARCH BASE
-  HEMAL ARCH BASE



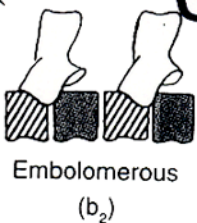
TETRAPODS

-  PLEUROCENTRUM
 -  HYPOCENTRUM
- Stereospondylous (b₁)

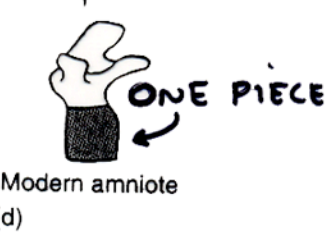
Bachitomous



- ① EARLY AMPHIBIANS
VARIOUS DESIGNS IN VERTEBRAL BODY (b, b₁, b₂)



- ② EARLY AMNIOTES
ENLARGE PLEUROCENTRUM
REDUCE HYPOCENTRUM



- ③ MODERN AMNIOTES
VERTEBRAL BODY HOMOLOGOUS TO ANCESTRAL PLEUROCENTRUM



LIVING AMPHIBIANS

VERTEBRAL BODY HOMOLOGY IS UNCERTAIN